

# Get Rolling on Your Next Job Site

## Knee Blades™ Revolutionizes Flooring Installation

Perhaps the greatest challenge to flooring professionals is the wear and tear the constant motion has on their bodies. After a long day of nailing underlayment, preparing concrete, gluing, or installing, one thing's for sure—knees, legs, back, and neck are stressed. And this stress leads to many other problems.

Mark Legenstein has grown up in the flooring industry. He's a second generation flooring installer who loved what he was doing, but experienced the pain and discomfort of working day-to-day in the field. But let Mark



tell his story. "Eight years ago, when I first started at my dad's business, Certified Carpet in Lancaster, PA, I was a helper/apprentice for the first three months. After becoming frustrated by the repetitive work taking what seemed to me to be too long and going home with sore legs and back too many days, I thought there had to be a better way. So I went out to a local hardware store, bought some dollies and bolted them to a knee pad. The results were incredible. It was a huge difference in speed and comfort. There was no moving directly on my knee or pounding my body. By gliding across the floor, it brought a different feeling and result to the job."

Mark's innovation led to Knee Blades™, a revolutionary tool for flooring professionals that already has gained the interest of the flooring industry. Knee Blades introduces a whole new level of knee pads for professionals. A state-of-the-art design, Knee Blades are completely manufactured in America of the highest quality materials, to the most rigorous standards in its class. Knee Blades' patented design allows users maximum mobility and functionality to move in any job site environment at "lightning speeds." Field tested and

installer approved, Knee Blades offer comfort and support both on wheels and off.

Knee Blades may be used for any job requiring extended periods of time kneeling. While originally designed for flooring professionals, painters, electricians, plumbers, auto mechanics, ATV mechanics, and general contractors have all enthusiastically endorsed this innovation for their own applications. The possibilities seem endless.



The knee pad is a one-strap, Velcro-fitted design that adds comfort and lessens tension on the back of the knee. The pad is shaped to fit the contour of the knee for added comfort and contains air pockets to evenly displace weight and lessen direct pressure on the knee. An extra layer of padding at the top of the pad adds to comfort when kneeling.

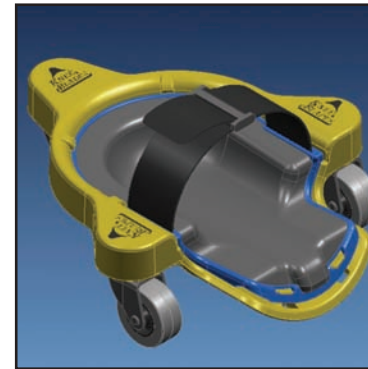
Made of the highest quality lightweight and durable plastic, the three-wheeled roller base allows for maximum mobility and speed. The design allows full 360° turn capability with-



out lifting from the floor. The best available wheels allow the user to glide from wall-to-wall in a minimal amount of time. And because each Knee Blade is independent of the other,

there's greater flexibility of use in those tight spots, allowing for more balance, flexibility, and mobility. Each Knee Blade weighs 3-1/4lbs., with the pad weighing 1 pound and the housing another 2-1/4 lbs. A "one-button" release allows the user to detach the wheeled base to take advantage of the made-for-comfort kneepads.

Knee Blades is a great investment for the flooring professional by solving the age-old problem of repetitive stress on the knee during all phases of flooring installation. It isolates the impact and



eliminates the problem through its innovative, patented design. This reduction of wear-and-tear on both the front and back of the knees, less strain and stress on the back, the added speed on the job, and the sheer fun of using this revolutionary product can add years to the effectiveness of anyone who experiences the rigor and physical demands of being an installer.

The elegant simplicity of the design makes it easy to use and practical to take on the job site. The one strap design ensures comfort and yet secures the Knee Blade in a way that makes the installer feel as though it's part of the leg. The flexibility of the two-in-one kneepad makes it easy to go from task-to-task without wasting time and motion. With a push of a button, it goes from Blade to kneepad, and with a simple click-in design, back to a Knee Blade again.

**Knee Blades have caught the interest of professionals in the field.**

- "It's so much quicker and easier to glue up a floor...very comfortable and easy to move back and forth...definitely less impact on the knee."—Coleman, flooring professional
- "They're great for gluing floors and VCT jobs."—Craig, flooring professional

- "Definitely an eye-catcher...great for drilling tack strip...they're fun working in them."—Dave, flooring professional

**General Contractors and other professionals have commented on how beneficial Knee Blades is to use.**

- "The fact that you don't have to be getting up and down and crawling around is huge. You can slide along as you need to."—Gary, professional electrician
- "You don't have to jump up and down as much...When painting or staining baseboard, you have a consistent flow, not bent over standing up."—Al, professional painter
- "Totally comfortable to work on...it makes an agonizing job that much easier."—Glen, professional plumber

Knee Blades is a well-made, well-designed product, created by a flooring professional who's been using the prototype since 1997. It promises to make a significant difference in the lives of trade professionals and the productivity and longevity of their work. ■



**Knee Blades LLC**

**932 High Street**

**Lancaster, PA 17603**

**866-88KNEES, 717-735-1350**

**Fax: 717-735-1349**

**Website: [www.kneeblades.com](http://www.kneeblades.com)**